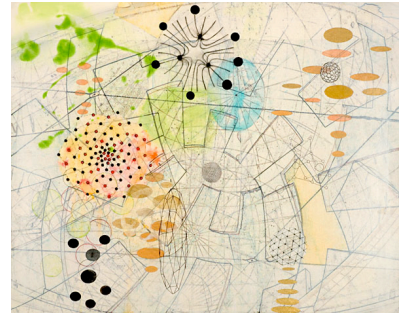


### **Surface Grade:**

Using the Mylar sheet provided, students will design and produce a drawing with attention to line, proportion, perspective, composition and surface. Color may be added for emphasis only and with limits and care.

on the surface. Also note you can use both sides of the surface as it is a translucent material.



**Line:** What kinds of lines are used? How do the lines create meaning? What is the meaning? Is there variation in line quality?

**Composition:** What kind of composition is used in the drawing? Are elements balanced? If so (or not), why or how?

**Perspective:** What kind of perspective have you used? How does the perspective used create meaning in the drawing?

**Surface:** How has your drawing brought our attention to the surface used? Have you used both sides of the paper? How has the surface affected the drawing or our understanding of it?

**Overall Interest:** Have you created an interesting solution to this surface problem? If so (or not) why or how?

**Effort and/or Risk:** Does this look like a finished drawing? Have you used the examples to help you develop new sensibilities, in this case to surface? Did you take any risks in developing the idea or the drawing?