

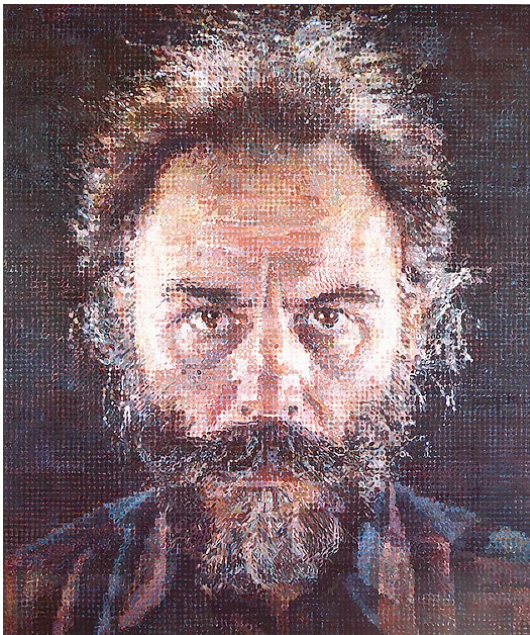
ART 202 Intro to Painting Due two weeks—see website for deadline.

The meaning in a FACE: Portraits in Art

Use the images below to direct you to the work of the artist presented. Discuss the artist and the ideas and/or motivation behind the work. Use art books, indicated sites, museum websites and/or other books to answer. Do not use Wiki sites, encyclopedia, dictionary, or other inappropriate sites.

Answer these questions for 2 of the 4 paintings:

1. Identify each piece by name, artist, date, materials, size.
3. Describe carefully. This means saying what you see—no interpretation.
2. Discuss the style of the work. Research this as it's going to be part of the discussion.
4. What is the artist trying to say or do with the painting?
5. How do the formal elements and style influence the meaning? Formal elements are things like: color, texture (brushwork—can we see it or is it smooth?), composition.
6. Does the scale of the painting influence the viewing experience? If so, how?



Lucas I, Chuck Close

<http://www.metmuseum.org/collection/the-collection-online/search/484760>

Please note: the Metropolitan Museum no longer allows direct links. This link can be cut and pasted into your browser or you can go to the MET homepage and search for Chuck Close. Make sure you are writing about this painting.

Go find it somehow on the Met website.

Same with Jenny Saville below if link doesn't work.



Still, Jenny Saville, 2003

<http://www.metmuseum.org/collection/the-collection-online/search/498651>



Self-Portrait with Cropped Hair, Frida Kahlo, 1940

Find information on the Museum of Modern Art website. If you are going to MoMA on Friday, find the work and write about the difference of seeing it in person.

http://www.moma.org/learn/moma_learning/frida-kahlo-self-portrait-with-cropped-hair-1940



Triple Portrait of Charles I, Kehinde Wiley, 2007

Use the Smithsonian National Portrait Gallery website listed below to choose one of the portraits by Wiley to discuss.

<http://www.npg.si.edu/exhibit/recognize/paintings.html>

12 point type. 1½ spacing. At least 2 pages carefully written and edited. Remember, only two paintings are to be discussed so take your time to write about the things I've identified at the beginning. Email to : byontz@stac.edu